

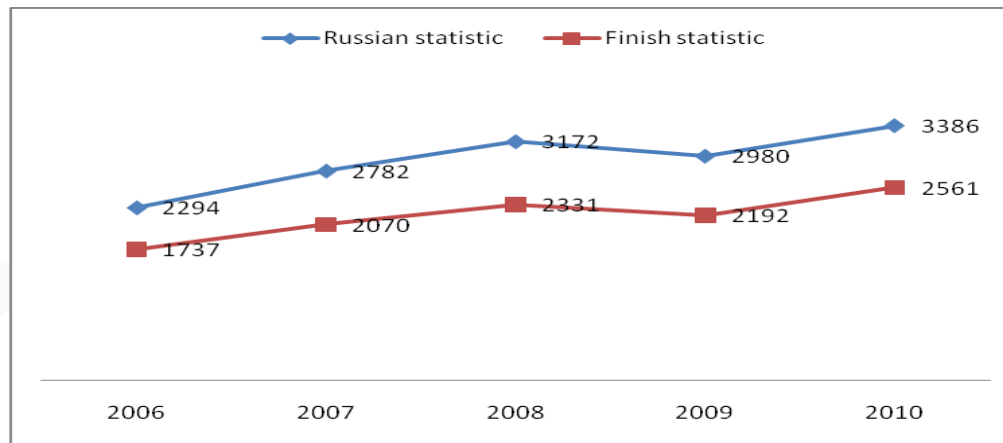
Visual modeling Finnish-Russian Cross-Border Communications

Dmitrij Koznov,
Saint-Petersburg State University,

3d ISS Conference, St-Petersburg,
Russia, 14 – 15 February 2013

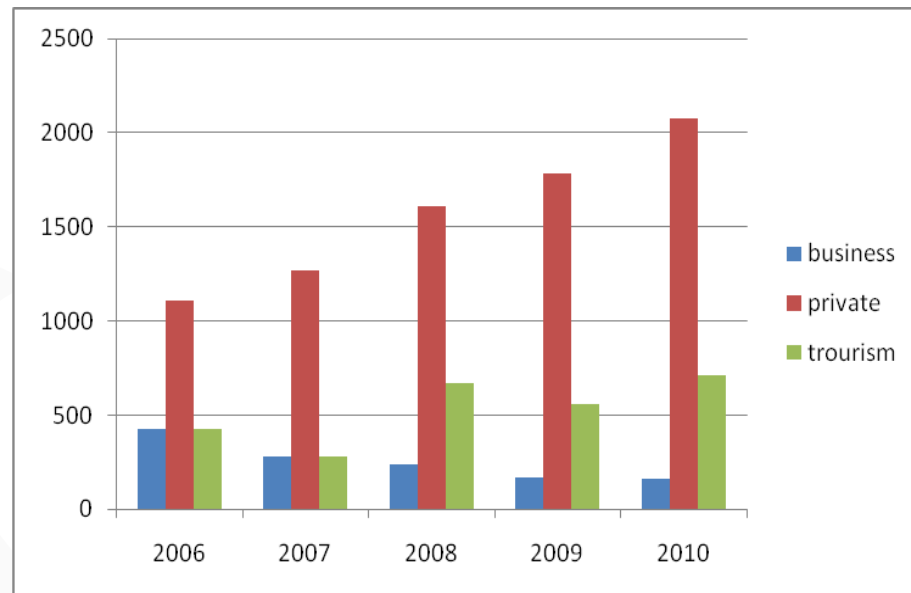
Russian-Finnish Cross-Border Communications

Trips Russians to Finland during 2006 – 2010



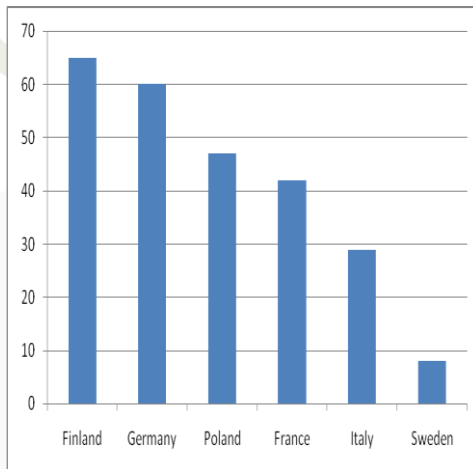
Russian-Finnish Cross-Border Communcations

Russian statistics of visits to Finland during 2006 – 2010

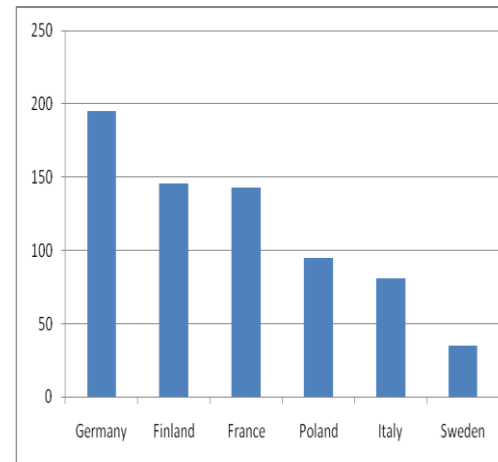


Russian-Finnish Cross-Border Communications in Education

Petersburg State University members:
international trips in 2010



Students



Staff

Our goal

- Development of innovation solutions to support Finnish-Russian free travelers

Our steps

1. Research of Internet resources: what kind of information is presented/discussed for/by Russian-Finnish travelers
2. Rate of Yandex/Google queries: development of ranged list of topics
3. Gathering and structuring information about selected topics
4. Development of Web-system

Our steps

1. Research of Internet resources: what kind of information is presented/discussed for/by Russian-Finnish travelers
2. Rate of Yandex/Google queries: development of ranged list of topics
3. Gathering and structuring information about selected topics
4. Development of Web-system

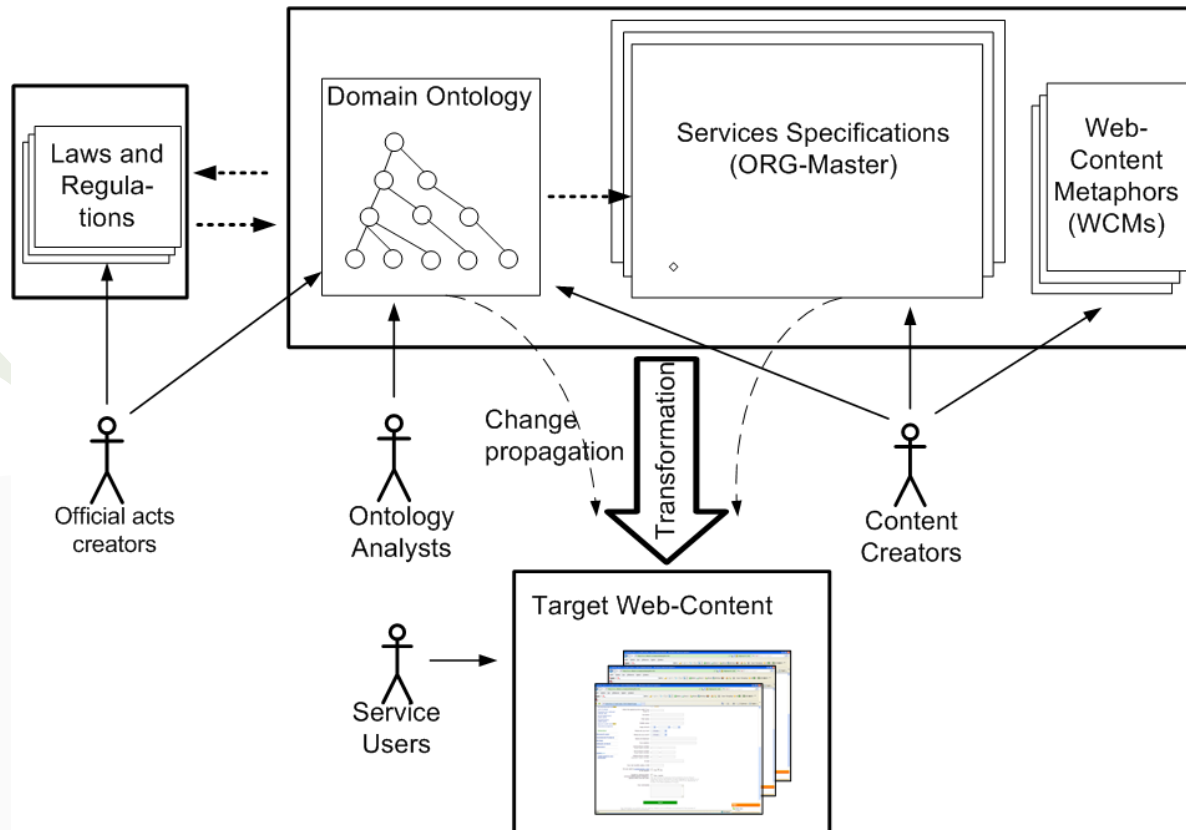
How to collect and structure information?

- Our Web-system is mostly information-oriented. It means it need a lot of good structured information
- Pilot specifications: – 40-70 pages of documentation for each selected topic. And quality of documentation was poor....
- How to collect and structure information?

Business modeling!

- ORG-Master methodology and tool:
 - Mature practical-oriented business modeling methodology
 - Tool support
 - Methodologists and developers are available
 - Documentation generation facilities

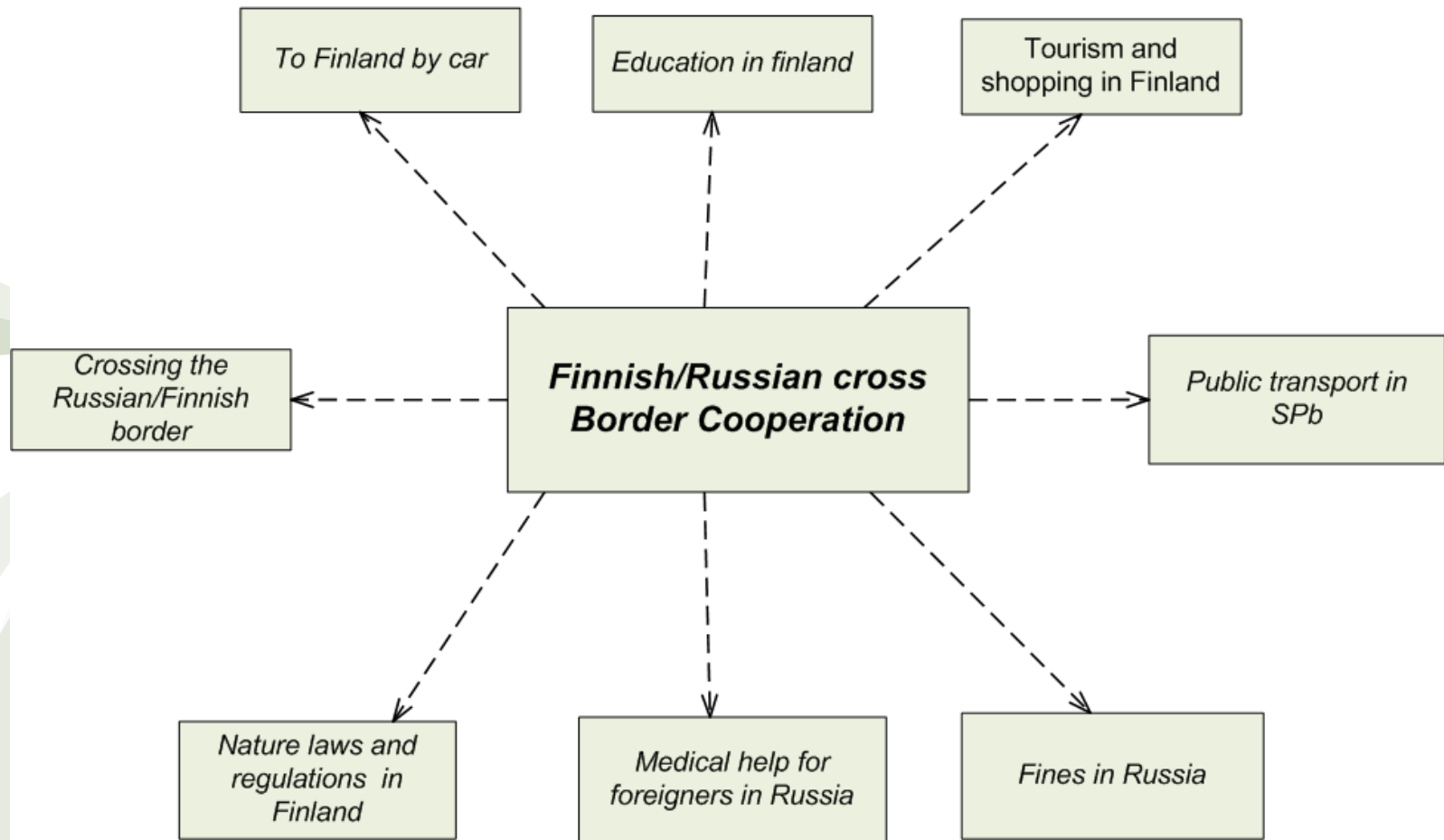
Method overview



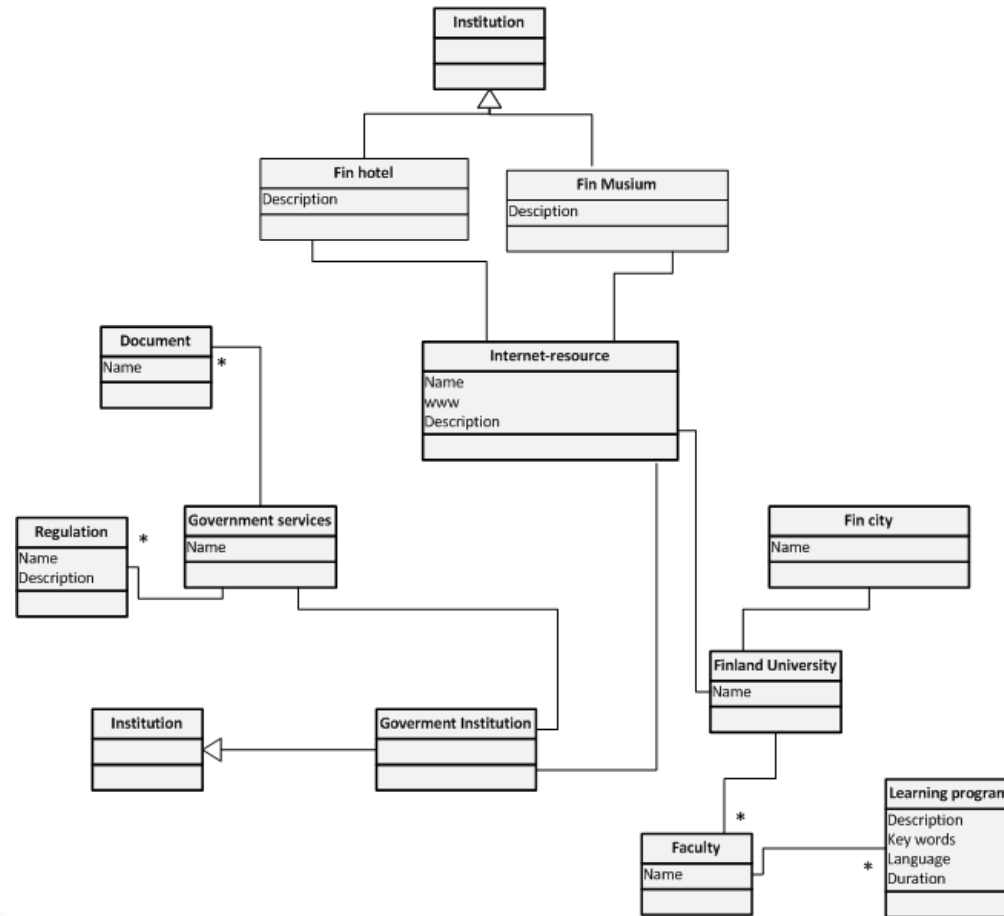
Ontology and service specifications

- Ontology scheme
 - Areas
 - Types (class diagrams)
 - ORG-Master schema
- Ontology with data (ORG-Master model)

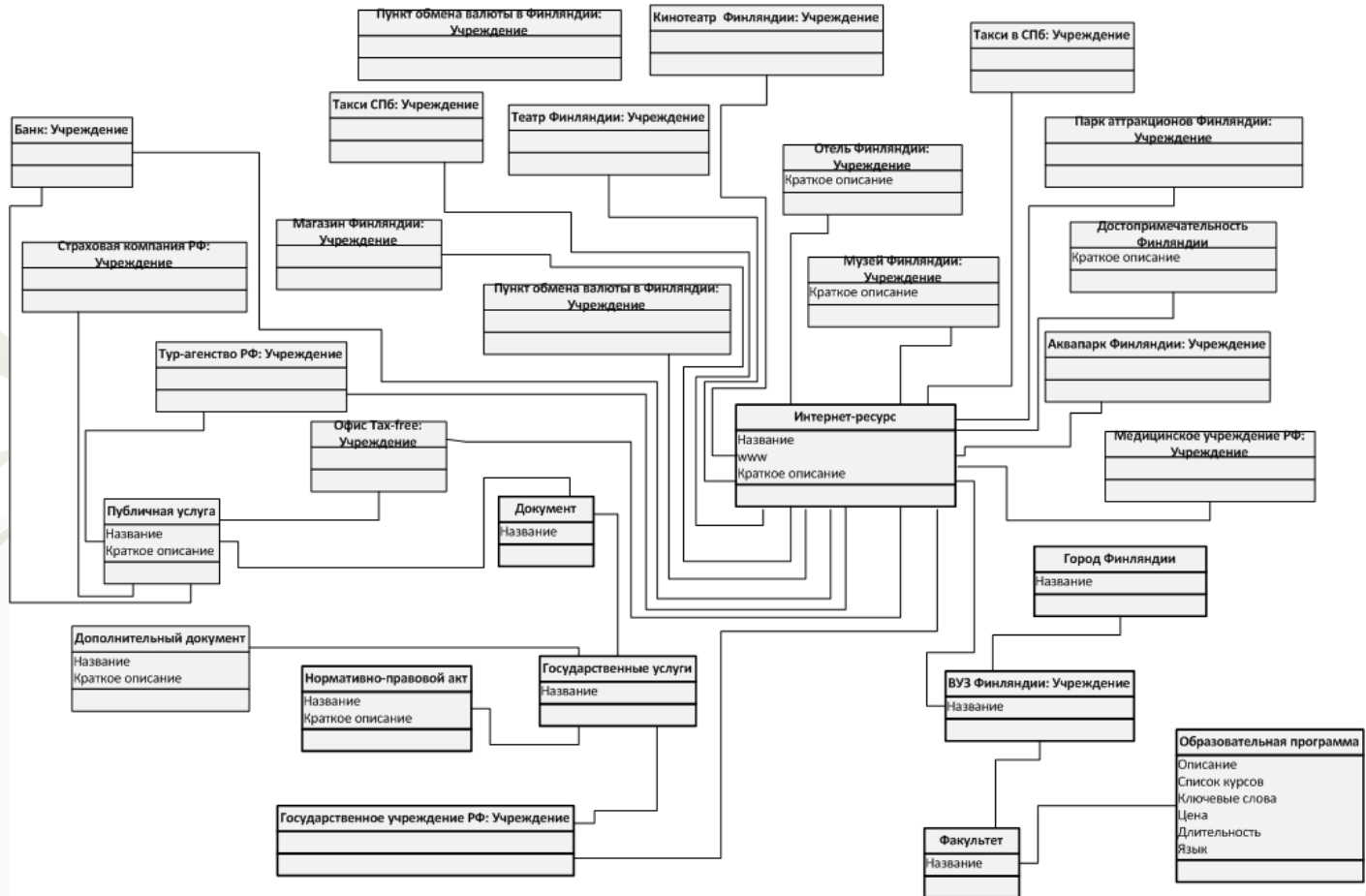
Areas



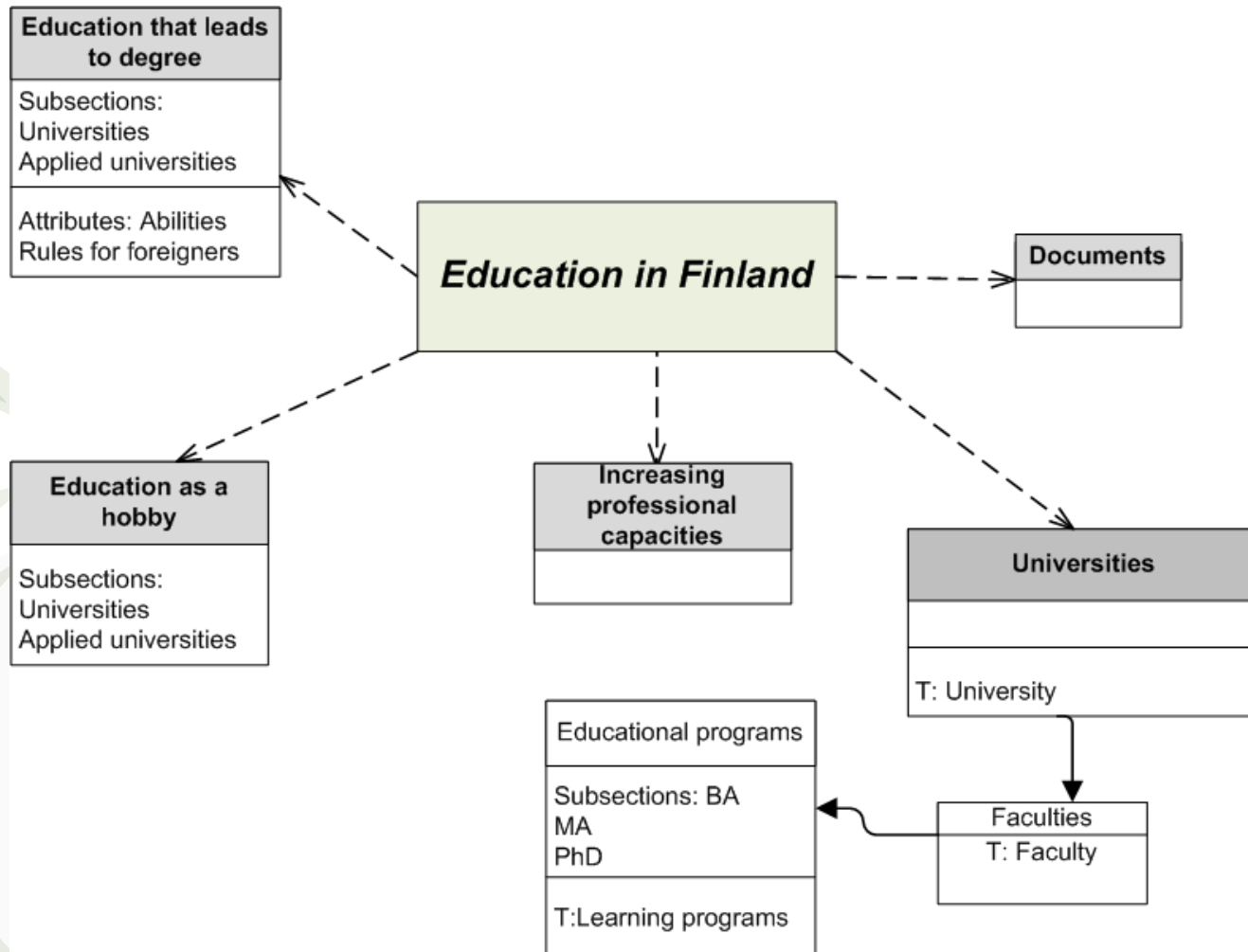
Types



Full type diagram



ORG-Master schema (fragment)



ORG-Master schema: Education in Finland



An Example of Generated Report

Cities of Finland	Shops	Cinemas	Theaters	Currency exchange
Lappeenranta	<ol style="list-style-type: none"> 1. Galleria 2. Iso Kristiina 3. Armada 4. Family Cente 5. K-ситимаркет 6. Prisma 7. Alko 8. Raja Market 9. Euromarket 10. Biltema 11. Lidl 12. GIGANTTI 13. Sahko-Vayla 14. UK Koskimies 15. Intersport 16. Lastentarvike 17. Alinan Bambino 18. Bobo 19. Crocoliini 20. Kidsavenue 21. Lelusentteri 22. Reima 23. Jysk 24. Pikku Leo 25. Halonen 26. Lauriina 27. Lilli 28. Elegantti 29. Karjala-Myykala 30. HyotyHalli 31. Suomi-kirppis 32. Musiikki Hyryylainen 	<ol style="list-style-type: none"> 1. Кинотеатр "Кино- Аула" 	<ol style="list-style-type: none"> 1. Lappeenrannan Kaupunginteatteri 	<ol style="list-style-type: none"> 1. Safar

Questions?